



Color shown:  
Golden  
Nutmeg

Color shown:  
Light Blonde

Color shown:  
Medium  
Blonde

1  
Out-of-the-Box

2  
Beach Combed

3  
Touchable Texture

# 1 style 3 LOOKS

envyhair™  
BY ALAN EATON

# CHELSEA

ENVY's exclusive **HEAT-FRIENDLY BLEND** makes the high-end, high-priced look of 100% human hair **MORE ACCESSIBLE THAN EVER**. Now, discover how to **MAKE IT YOUR OWN**.

envyhair™  
BY ALAN EATON

**30% Human Hair.**  
**70% Synthetic Hair.**  
**100% YOU.™**



Download more  
step-by-step how-tos at  
[envywigs.com/product-education](http://envywigs.com/product-education)  
(or watch the video at  
[envywigs.com](http://envywigs.com))

## out-of-the-box

# 1: shoulder-length luxe

CHELSEA has the touch of real human hair. AND the look—thanks to its hand-tied Mono Top design that mimics natural hair's growth and movement.

# 2: beach combed

EnvyHair's fiber memory locks in as it cools to hold its style longer—whether its air- or blow-dried (using medium heat and the Cool Shot button).



**STEP 1:** Secure wig with 2" T-pins.

**STEP 2:** Set a 1 ¼" curling iron no higher than **285°F (140°C)**.



**STEP 3:** Curl 1" wide vertical sections away from the face beginning near the cheekbones.



**STEP 4:** Clip at the round of the curl, leaving the ends out to cool.

**STEP 5:** Alternate direction AWAY FROM FACE & TOWARD THE FACE, clipping each section to cool.

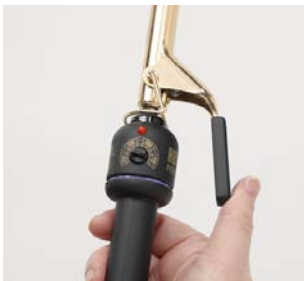


**STEP 6:** Allow hair to COOL 100% in the curled position.

**STEP 7:** Remove clips and use **ENVY'S Wide-Tooth Comb** to loosen curl and add visible texture.

# 3: making waves

More durable than 100% human hair, CHELSEA's heat-friendly EnvyHair™ blend cuts styling time in half—and can go curly, wavy and back to straight again.



**STEP 1:** Use a 5/8" curling iron SET NO HIGHER THAN **285°F (140°C)** and curl ½" vertical sections away from face, beginning near the cheekbone.



**STEP 2:** Allow curl to drop as it cools to relax the curl pattern.



**STEP 3:** Continue with ½" vertical sections directed away from the face on both sides and alternating directions from ear-to-ear back.



**STEP 4:** When 100% COOLED, comb through with **ENVY'S Wide-Tooth Comb**.

**STEP 5:** Define the curls with **ENVY'S Beauty Balm Sculpting Crème** for touchable texture.

