



Color shown:  
Light Blonde

Color shown:  
Dark Blonde

Color shown:  
Toasted  
Sesame

1  
**Out-of-the-Box**

2  
**True Texture**

3  
**Bombshell Bob**

*1 style*  
**3 LOOKS**  
envyhair™  
BY ALAN EATON

**ZOEY**

ENVY's exclusive **HEAT-FRIENDLY BLEND** makes the high-end, high-priced look of 100% human hair **MORE ACCESSIBLE THAN EVER**. Now, discover how to **MAKE IT YOUR OWN**.

envyhair™  
BY ALAN EATON

**30% Human Hair.**  
**70% Synthetic Hair.**  
**100% YOU.™**



Download more  
step-by-step how-tos at  
[envywigs.com/product-education](http://envywigs.com/product-education)  
(or watch the video at  
[envywigs.com](http://envywigs.com))

# 1: out-of-the-box side swept

ZOEY features a flattering, face-framing cut and a Lace Front Mono Top construction that lets you heat-style any way you choose.

# 2: true texture

EnvyHair's fiber memory locks in as it cools to hold its style longer—whether its air- or blow-dried (using medium heat and the Cool Shot button).



**STEP 1:** Secure wig with 2" T-pins.



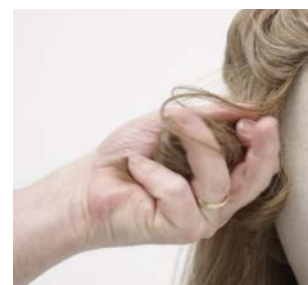
**STEP 2:** Clip the TOP HALF of the wig out of the way and begin with the LOWER SECTION.

**STEP 3:** On lower section, USE A 1 3/4" CURLING IRON SET TO 285°F (140° C) and iron in waves in 1" x 3" vertical sections, leaving the ends out.



**STEP 4:** Release top section.

**STEP 5:** Use a 1 1/4" curling iron SET TO 285°F (140° C) and curl 1" x 2" vertical sections away from the face, beginning at the cheekbones.



**STEP 6:** Alternate cooling method BY SECTION:

- Scrunching in hand (and letting cool) for a tighter curl pattern.
- Dropping to cool for a looser curl pattern.

**STEP 7:** Once 100% COOLED, use **ENVY's Wide-tooth Comb** to blend sections, creating a perfectly imperfect texture.



# 3: bombshell bob

More durable than 100% human hair, ZOEY's heat-friendly EnvyHair™ blend cuts styling time in half—and can go curly, wavy and back to straight again.



**STEP 1:** ESTABLISH PART on left side.



**STEP 2:** Using a 1 3/4" curling iron SET TO 285°F (140° C) curl 2" vertical sections away from the part, beginning near cheekbones.



**STEP 3:** Clip each section on the bend (leaving ends out) to cool completely.

**STEP 4:** Repeat steps 2 and 3 until all hair is curled.



**STEP 5:** When 100% COOLED use **ENVY's Wide-tooth Comb** to comb style into place.