

Color shown:
Ginger Cream

Color shown:
Medium Brown

Color shown:
Medium
Grey

1
Out-of-the-Box

2
Playful Pixie

3
Short & Chic

1 style 3 LOOKS

envyhair™
BY ALAN EATON

DESTINY

ENVY's exclusive **HEAT-FRIENDLY BLEND** makes the high-end, high-priced look of 100% human hair **MORE ACCESSIBLE THAN EVER**. Now, discover how to **MAKE IT YOUR OWN**.

envyhair™
BY ALAN EATON

30% Human Hair.
70% Synthetic Hair.
100% YOU.™

Download more
step-by-step how-tos at
envywigs.com/product-education
(or watch the video at
envywigs.com)

1: out-of-the-box chic shag

DESTINY features a classic pixie cut with piece-y bangs, a Mono Top construction, and Hand-Tied sides and back that let you heat-style any way you choose.

2: playful pixie

EnvyHair's fiber memory locks in as it cools to hold its style longer—whether it's air- or blow-dried (using medium heat and the Cool Shot button).



STEP 1: Secure wig with 2" T-pins.

STEP 2: Determine desired part placement.

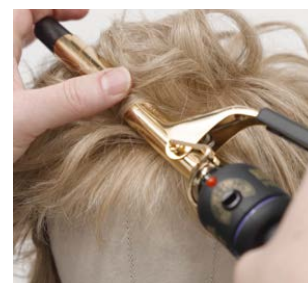


STEP 3: With a flat iron, smooth hair below the part straight down and tuck remaining length behind ear to create an asymmetric profile.



STEP 4: Set 5/8" barrel iron no higher than **285°F (140°C)**.

STEP 5: Curl 1/2" sections up and away from the part for maximum volume.



STEP 6: Repeat through entire wig, USING SMALLER SECTIONS AND CURLS as hair gets shorter.

STEP 7: Finish with **ENVY Freeze Frame Hairspray**.

3: short & chic

More durable than 100% human hair, DESTINY's heat-friendly EnvyHair™ blend cuts styling time in half—and can go curly, wavy, and back to straight again.



STEP 1: MIST the hair fibers with WATER.

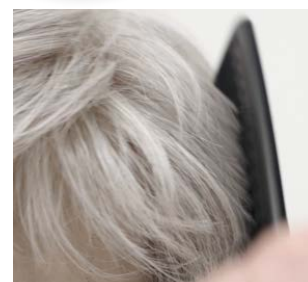


STEP 2: Using a 1 1/4" round brush and blow dryer ON MEDIUM HEAT, dry top sections away from part to create volume.

STEP 3: USE SMALLER BRUSH, if desired, to style the short hair.



STEP 4: Work a small amount of **ENVY Beauty Balm Sculpting Crème** all over to create texture and hold.



STEP 5: Use **ENVY's Wide-tooth Comb** or your fingers to finish desired style.

