



Color shown:  
Sparkling  
Champagne

Color shown:  
Toasted Sesame

Color shown:  
Light Brown

1  
**Out-of-the-Box**

2  
**Leading Part**

3  
**Fringe Appeal**

*1 style*  
**3 LOOKS**  
envyhair™  
BY ALAN EATON

**SHYLA**

ENVY's exclusive **HEAT-FRIENDLY BLEND** makes the high-end, high-priced look of 100% human hair **MORE ACCESSIBLE THAN EVER**. Now, discover how to **MAKE IT YOUR OWN**.



**30% Human Hair.**  
**70% Synthetic Hair.**  
**100% YOU.™**



Download more  
step-by-step how-tos at  
[envywigs.com/product-education](http://envywigs.com/product-education)  
(or watch the video at  
[envywigs.com](http://envywigs.com))

# 1: out-of-the-box easy breezy

SHYLA features an ultra-soft, breathable silk chiffon-lined cap that's perfect for sensitive scalps and a Hand-Tied, Mono Top construction that mimics hair's natural movement (no matter how you style it).

# 2: leading part

EnvyHair's fiber memory locks in as it cools to hold its style longer—whether it's air- or blow-dried (using medium heat and the Cool Shot button).



**STEP 1:** Secure wig with 2" T-pins.

**STEP 2:** 1" BACK FROM HAIRLINE, place 2 hot rollers on each side parallel to middle part and directed down.



**STEP 3:** PLACE 3 HOT ROLLERS HORIZONTALLY in the back, below the crown, with hair directed down.



**STEP 4:** Using a 1¼" curling iron set at **285°F (140° C)** curl vertical fringe sections at the hairline away from the face.

**STEP 5:** At nape, curl 1" sections directed down.



**STEP 6:** CURL "UNTUCKED" section in front of ears to mimic a rounded bob.

**STEP 7:** Once 100% COOLED, use **ENVY's Wide-tooth Comb** to achieve desired shape.



# 3: fringe appeal

More durable than 100% human hair, SHYLA's heat-friendly EnvyHair™ blend cuts styling time in half—and can go curly, wavy, and back to straight again.



**STEP 1:** Use a 1" curling iron set at **285°F (140° C)** to curl 1" x 1" sections beginning at the part and directed away from face.

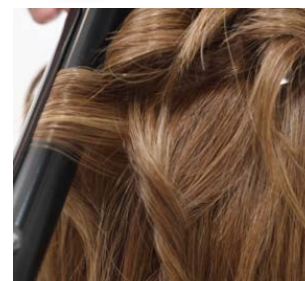


**STEP 2:** Continue through the crown area USING WAGON-WHEEL sectioning.

**STEP 3:** MIMIC THIS SECTIONING from the top down until complete.



**STEP 4:** ALTERNATE THE DIRECTION from ear-to-ear back for multi-directional texture.



**STEP 5:** When 100% COOLED use **ENVY Freeze Frame Hairspray** to lock in the style.